



PRoTECT online seminar

Session 2

*Case studies: The protection of public spaces at
practitioner level*

Project SERVATOR

Inspector Nick Thatcher

Metropolitan Police - London

16 July 2020



Content

- I. Introduction of the problem
- II. The proposed solution
- III. Results
- IV. Challenges and lessons learned

Introduction of the problem

- Terrorist attacks all require a level of Hostile Reconnaissance that gives the attacker the information needed to mount a successful attack and the confidence to take action
- Crowded places and iconic sites usually have multiple business interests with different security provision proportionate to individual risk/threat
- Hostile Reconnaissance (HR) of a high risk venue can take place from a low risk venue reducing the effectiveness of security provision
- The public space between sites rarely has dedicated security provision
- Police are not always there. We needed an approach that would empower the usual site to take steps to frustrate HR

The proposed solution

- The solution will 'Target Harden' the site through empowerment of the usual site users to identify HR and either call police or make an approach
- The site will become a hostile environment for people with criminal intent. Specially trained officers can then identify these people through their actions.
- This is a national approach that creates an on-line presence. National Coordination is through City of London Police.
- Police signpost normal site users to other Government Counter Terror training packages designed to prepare the public/businesses for a successful attack
- Officers work with specialist police units, local government, site management/security, the public and anybody that uses the site as part of 'normal business'.

The proposed solution

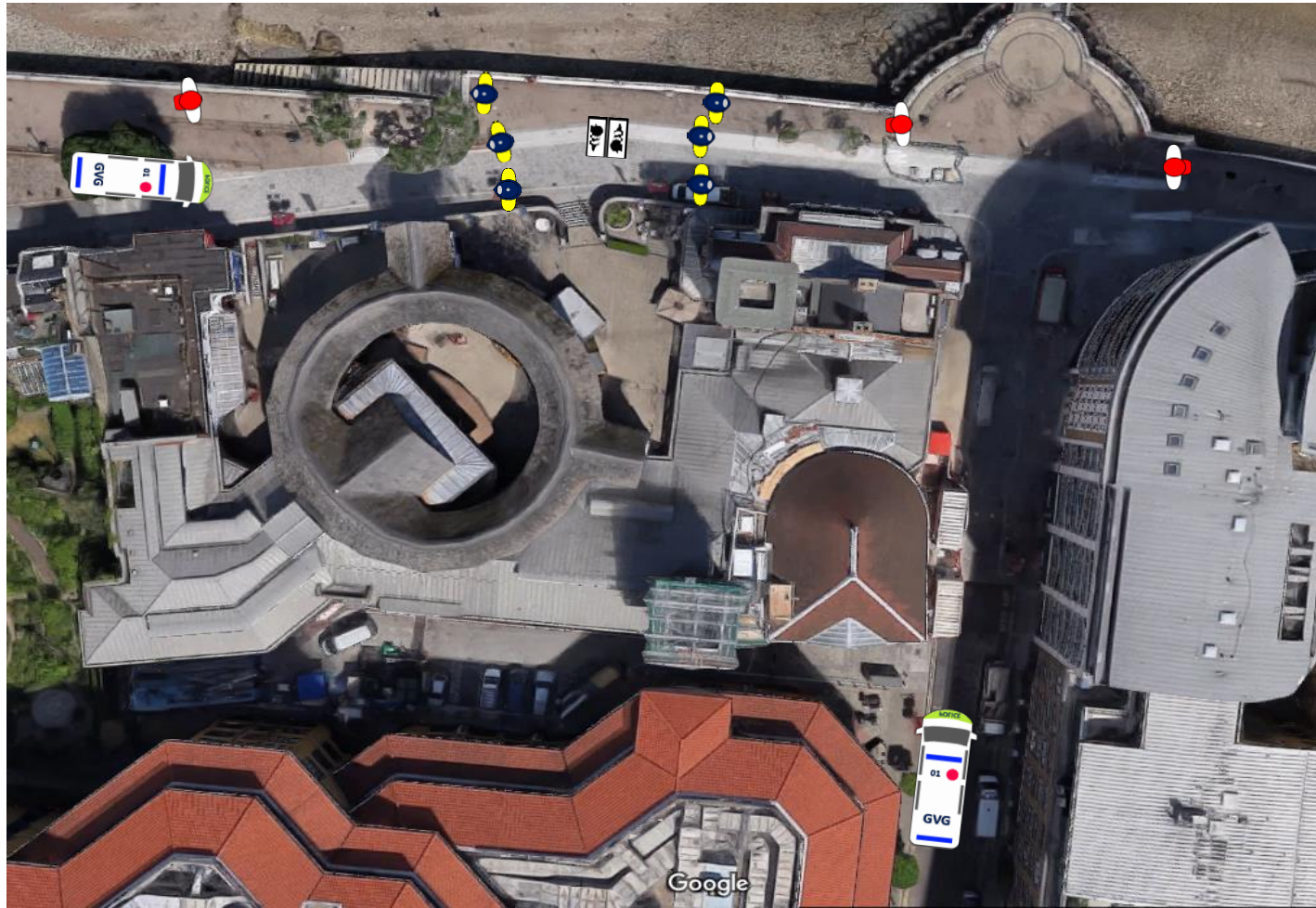
Police Investment

- Staff and training
- Engagement literature
- Time

Site Investment

- Time sacrifice to allow training
- Willingness to be associated with police
- Willingness to allow police 'footprint' on their on-line presence.

In many way this is an 'idea' to be adopted rather than a product to be bought



Satellite overview of location with possible parking locations

Results

- It must be remembered that this project is one part of a range of complimentary solutions developed by the UK and should not be considered on it's own
- There have been no successful attacks on a site protected by Project Servator, Metropolitan Police. It is probable that this will change.
- Domestic criminals are arrested daily indicating that protected sites are hostile territory for people with evil intent
- Arrests have been made under Counter Terror legislation
- There has been an increase in intelligence flow
- Normal site users report increased satisfaction with police.



Newham MPS
@MPSNewham

Follow

This week officers from #ProjectServator stopped a vehicle as part of joined up working with the VCTF. The occupants and vehicle were searched and a firearm was found. All three were arrested for firearms offences #Security #WePopUpEverywhere



3:19 PM - 2 Nov 2018

2 Retweets 9 Likes



Tower Hamlets Police
@MPSTowerHam

Following

#ProjectServator officers are trained to spot suspicious behaviour. One male clearly didn't see our plain clothes officers @yourcanarywharf and was searched and arrested for being in possession of cannabis and stolen items. As part of this incident these have all now been seized!



8:20 PM - 2 Oct 2018

24 Retweets 67 Likes



Newham MPS
@MPSNewham

Follow

Three males in custody, cash and class "A" drugs seized. #ProjectServator officers can and do spot criminality, even when criminals try to hide their intentions. #watchingforcrime #police #security @NewhamLondon



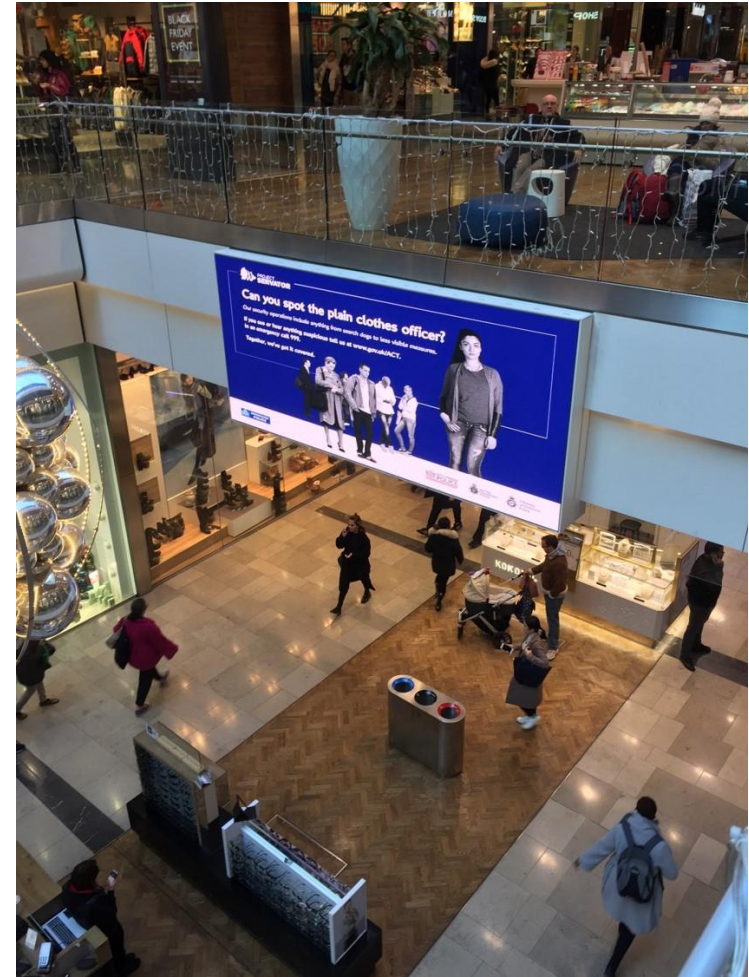
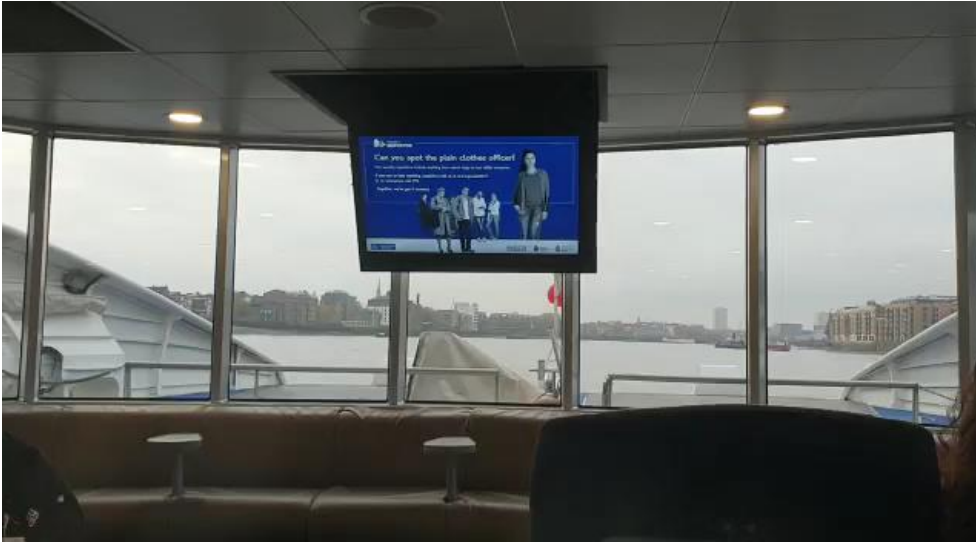
7:35 PM - 5 Oct 2018

2 Retweets 14 Likes



TOTAL POLICING





“It is not in the stars to hold our destiny but in ourselves” William Shakespeare

You can play a vital role by being vigilant when you are in the area and reporting anything that doesn't feel right, for example an unattended item or someone acting suspiciously.

Don't leave it to someone else to report it.

Tell us at www.gov.uk/ACT or in an emergency call 999.

TOGETHER, WE'VE GOT IT COVERED



TOTAL POLICING



RESTRICTED

Challenges and lessons learned

- The biggest challenge is educating the normal site user on Counter Terrorism without increasing alarm or fear.
- This has been achieved by adopting a conversational approach with the public and site staff that is repeated time and time and time again until it becomes routine.
- Small business such as local coffee shops have a good retention rate of staff. Large multi national businesses have a high turn over of staff. This dilutes the impact of the work.
- This has been addressed by a willingness to repeatedly engage with all level of staff multiple times.
- Internal communications within the police must be good to ensure that all reports of suspicious activity are responded to at protected sites. Trust is hard to build but easy to lose.
- This whole tactic depends upon the police and public communicating with each other.

End of presentation