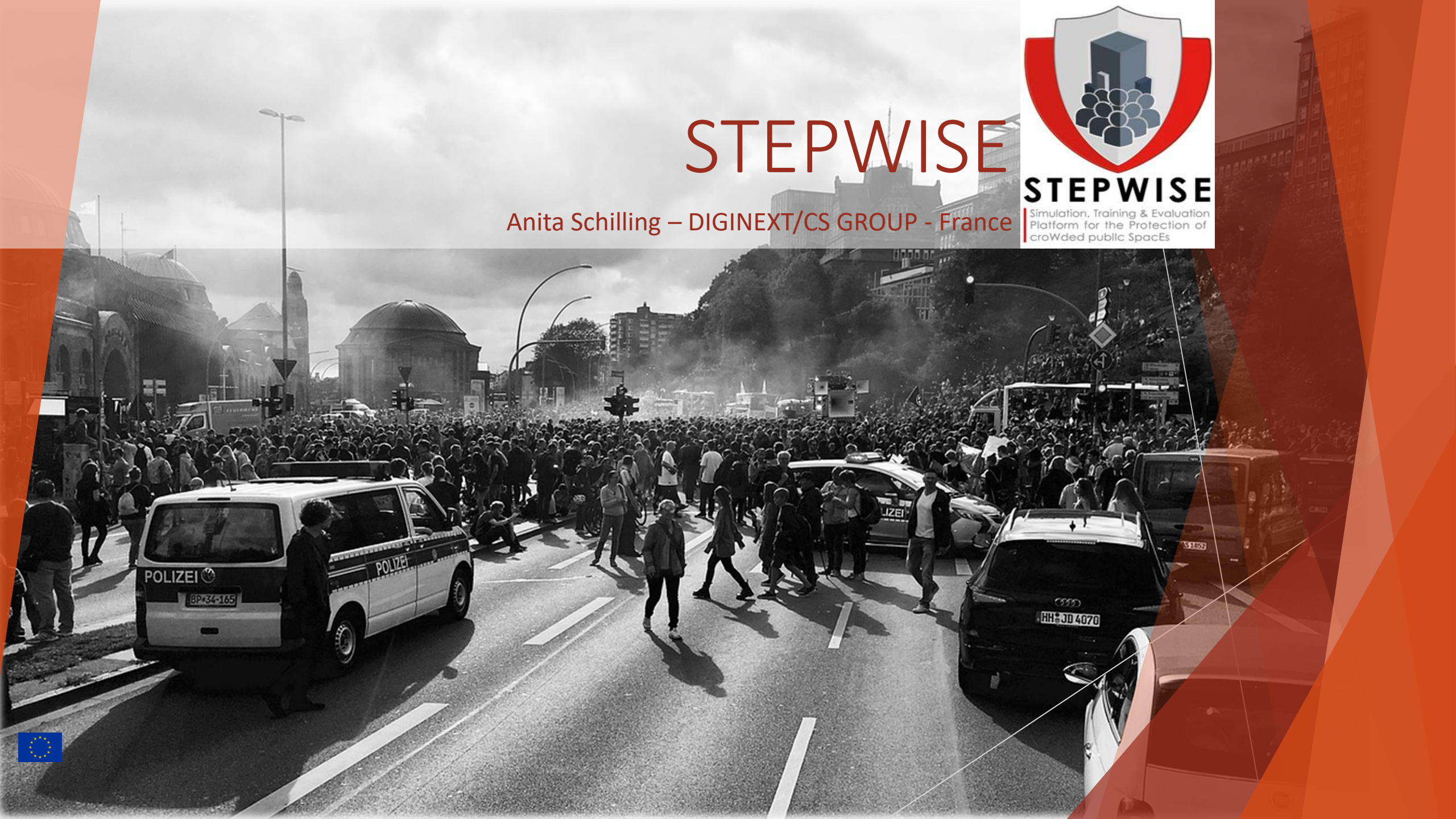


STEPWISE

Anita Schilling – DIGINEXT/CS GROUP - France



Context

EC Project STEPWISE

- ▶ Difficulties for security planning
 - ▶ Cooperation and collaboration among various organisations
 - ▶ Physical presence on-site even for assessment reasons impacts public
 - ▶ Pen & paper processes make it difficult to communicate the same (mental) image
- ▶ Objective
 - ▶ Visualising the scene of interest
 - ▶ Sharing the same visualisation with colleagues to be on the same page
 - ▶ Support routine activities and procedures with digital tools



The STEPWISE project

- ▶ 29-months project (11/2018 – 03/2021)
- ▶ Funded by Internal Security Fund - Police
- ▶ Follow-up of FP7 project VASCO
- ▶ Consortium
 - ▶ Technical: CS GROUP (coordinator), LCU
 - ▶ Expertise: EOS, Crisisplan
 - ▶ End users:
 - ▶ French Ministry of Interior (FMI)
 - ▶ Belgian Federal Police (DSU)
 - ▶ Police of The Hague (PEDH)
 - ▶ Greek Center for Security Studies (KEMEA)



STEPWISE has received funding from the European Union's Internal Security Fund, under grant agreement No. 815182

Software tools

Overview

- ▶ STEPWISE Building editor for the rapid creation of 3D mock-ups of real-world spaces and buildings
- ▶ STEPWISE platform for
 - ▶ The study of security design and vulnerability assessment
 - ▶ The definition of security and response plans adapted to the situation
 - ▶ The assessment of those plans by playing scenarios and red-teaming



STEPWISE has received funding from the European Union's Internal Security Fund, under grant agreement No. 815182

The STEPWISE platform

CRIMSON 5.1.0.11710 (Alpha)

08:45
November, 25 2020

STEPWISE

The STEPWISE project has received funding from the European Union's Internal Security Fund programme under grant agreement No. 815182.

Auto-Share
Overview

3D 2D
3D

Places

Lat : 52.0808° | Lon : 4.3193° Elev 0 m

Checklist

Show terminated Your current checklists

Demonstration_25Nov2020 4 / 5

Your current models

DemonstrationEvent 6 items
Security planning for demonstration (city center)

BuildingEmbassy 5 items
Building security planning - Embassy

rmarechal RML_12112020_20201112_1753

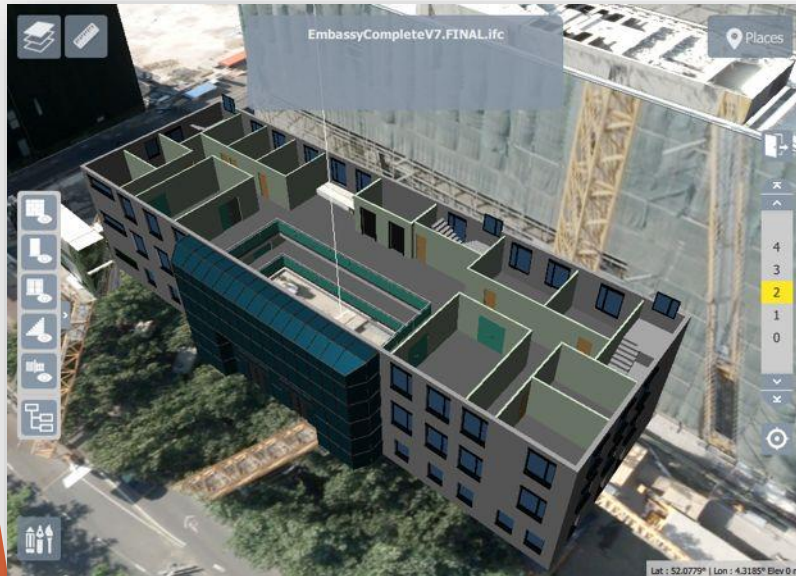


STEPWISE



Security design and planning

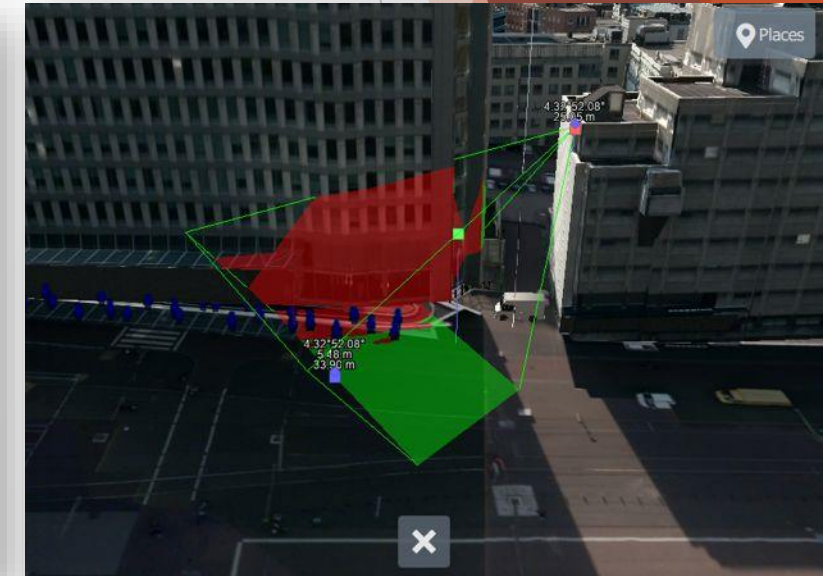
- ▶ Refine the security design of a building
- ▶ Optimize the positioning of sensors, staff and equipment
- ▶ Study fields of view, lines of sight, visibilities and blind zones



Building security



Position objects, vehicles, equipment



Evaluate intervisibility



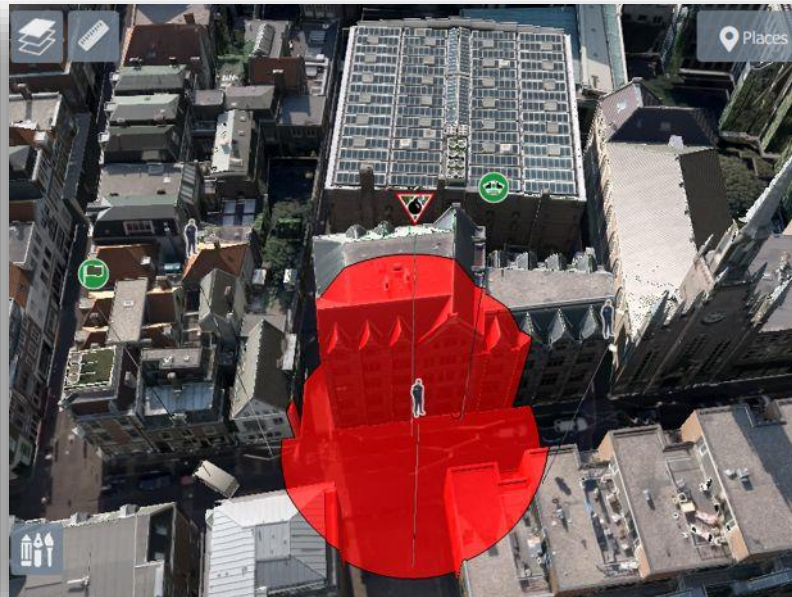
STEPWISE has received funding from the European Union's Internal Security Fund, under grant agreement No. 815182

Vulnerability assessment

- ▶ “Virtual playground” to play through all possible threat scenarios
- ▶ Walkthrough established security concepts for assessment and training



Demonstration



Abandoned package



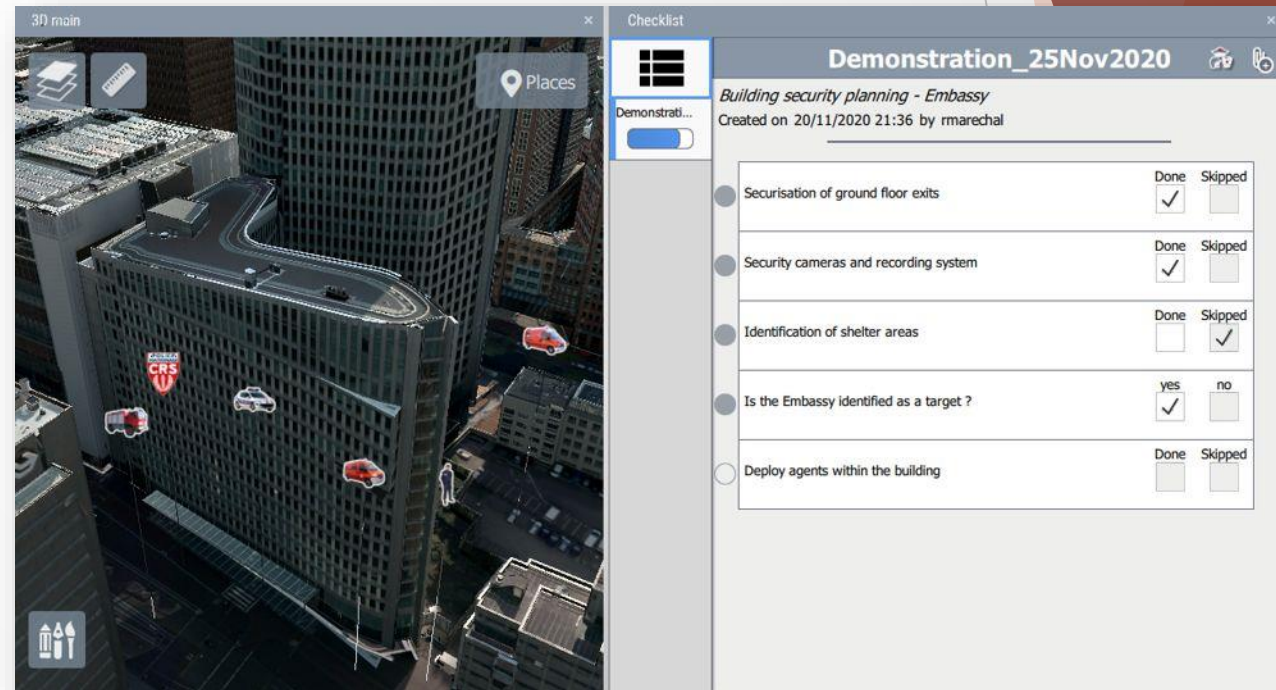
Intrusion



STEPWISE has received funding from the European Union's Internal Security Fund, under grant agreement No. 815182

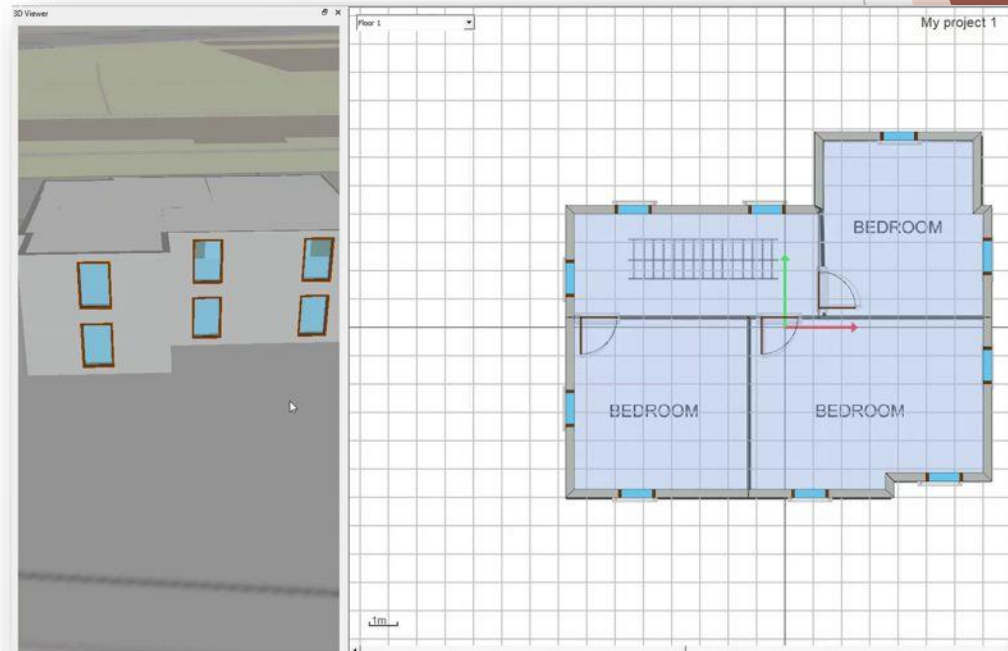
Cooperation and coordination

- ▶ Work collaboratively on the same scene
- ▶ Definition of checklists and procedures
- ▶ After-action review



The STEPWISE Building Editor

- ▶ Easy-to-use, rapid mock-up creation
- ▶ Create a 3D building using 2D floorplans
- ▶ 3D model (IFC) compliant with BIM standards



STEPWISE has received funding from the European Union's Internal Security Fund, under grant agreement No. 815182

Results

- ▶ Positive resonance from end-users
 - ▶ Remote collaborative work
 - ▶ STEPWISE platform allow to visualize and thus have everybody on the same page
- ▶ Building models
 - ▶ Realistic models are highly needed
 - ▶ STEPWISE building editor is user-friendly
- ▶ Limits
 - ▶ STEPWISE Building editor is not a full-featured architecture software
 - ▶ STEPWISE platform, as project result, is a generic tool – needs adaption to specific organisation



Invitation

Save the date

What? **STEPWISE Practitioners Workshop #3**

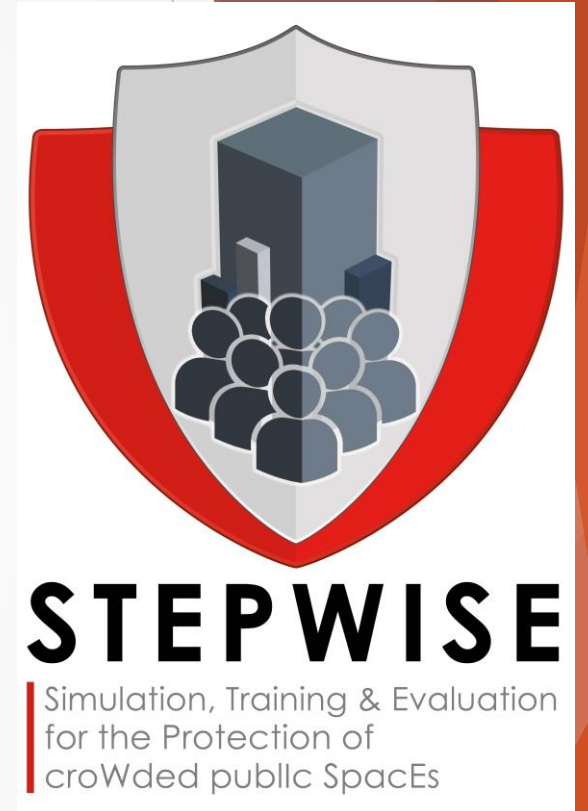
Hands-on workshop open to external guests – Test the tools yourself.

When? 4 March 2021, 11 or 12 March 2021 – to be confirmed

Registration contact:

Lavinia Cadar, CRISISPLAN

cadar@crisisplan.nl



STEPWISE has received funding from the European Union's Internal Security Fund, under grant agreement No. 815182

Thank you for your attention.



Anita SCHILLING



CS GROUP - France



anita.schilling@csgroup.eu

www.stepwise-project.eu



STEPWISE has received funding from the European Union's Internal Security Fund, under grant agreement No. 815182